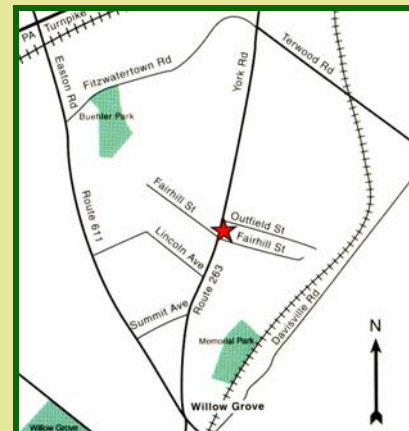


711 North York Road Willow Grove, PA



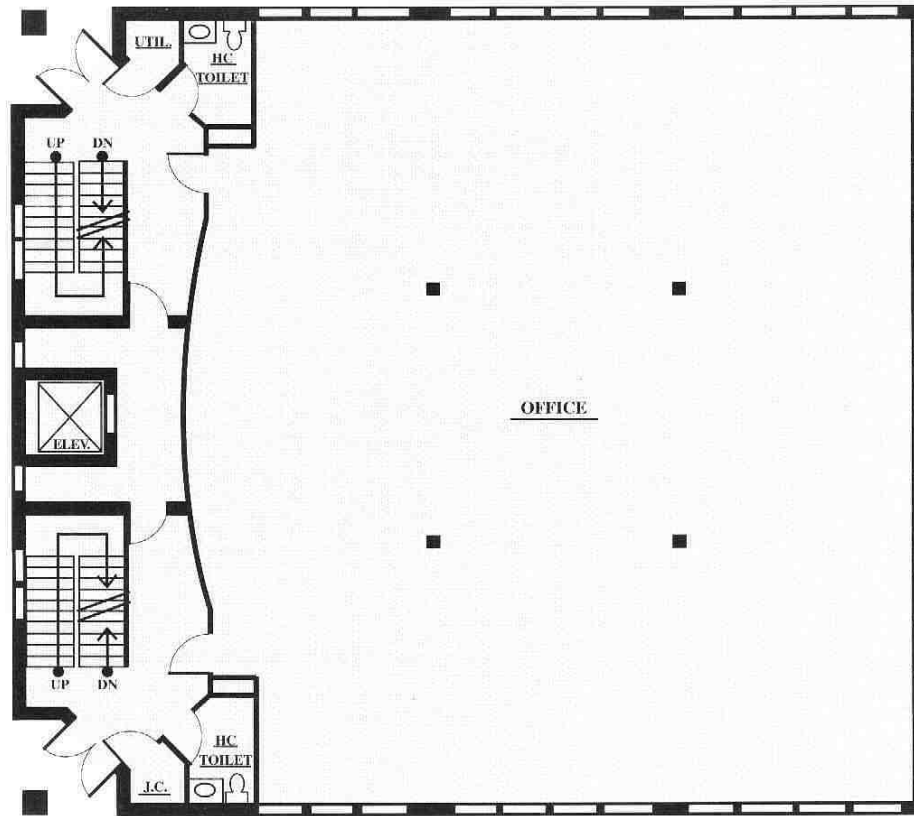
FOR LEASE - 2,500 - 10,000 SF **Two-story Elevator Served Class "A" Office Building**

Located on N. York Road (PA Route 263), just north of the Willow Grove Business District, Willow Grove Region Shopping Mall and less than 5 minutes from PA Turnpike. Septa bus at door and only 7 blocks to Septa Rail Station. Surrounding amenities include restaurants, retail shops, banks and public park.



Exclusive Agents

QUINN & WILSON, Inc. Realtors



For Lease 5,000-10,000 SF CLASS "A" Office Space
711 N. York Road
Willow Grove, Upper Moreland Twp.
Montgomery Co., PA

Building Size:	10,000 sq. ft.	Elevators:	Passenger elevator
Construction:	Masonry	Parking:	5 spaces per 1,000 sq. ft.
HVAC:	4 zoned heat pump with gas back up	Fire Protection:	Wet sprinkler system
Lighting:	2' x 4' recessed fluorescent fixtures	Availability:	Summer 2001

QUINN & WILSON, Inc. Realtors

1494 Old York Road, Abington, PA 19001 Tel: 215-885-7600 Fax: 215-885-4371

www.quinnwilson.com